

**ITEM**  
ED D1CY0934

**LIGHT SOURCE**  
4.5W

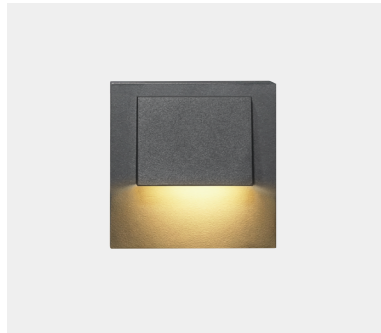
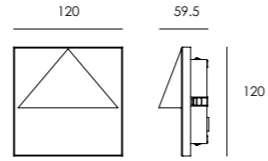
**INPUT VOLTAGE(V)**  
DC 24 240

**OPERATING CURRENT(MA)**  
DC 24=250 240=46

**CONSUMPTION(W)**  
DC 24=6 240=6.3

**LUMINANCE(LM)**  
199

**IK**  
07



**ITEM**  
ED D1CX0934

**LIGHT SOURCE**  
4.5W

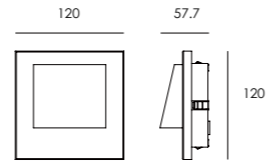
**INPUT VOLTAGE(V)**  
DC 24 240

**OPERATING CURRENT(MA)**  
DC 24=250 240=46

**CONSUMPTION(W)**  
DC 24=6 240=6.3

**LUMINANCE(LM)**  
172

**IK**  
07



**ITEM**  
ED D1CZ0934

**LIGHT SOURCE**  
4.5W

**INPUT VOLTAGE(V)**  
DC 24 240

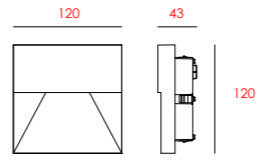
**OPERATING CURRENT(MA)**  
DC 24=250 240=31

**CONSUMPTION(W)**  
DC 24=6 240=6.3

**LUMINANCE(LM)**  
186

**IK/ CCT/ CRI**  
06/ 3000K/ 80

**Life span: 50000 Hrs**

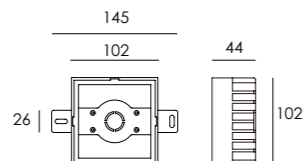


EX W02

RECESSED SLEEVE(Included)



Sleeve 150#



**HOUSING** 12# Die-casting powder coated aluminum  
T=60-80μm. Adhesion of ISO class 1/ASTM class 4B

**LIGHT WINDOW** Glass

**LED TYPE** SMD

**CABLE GLAND** IP67

**GASKET** Tooling shaped seal

**RECESSED SLEEVE** PC/ABS ALLOYS 150#

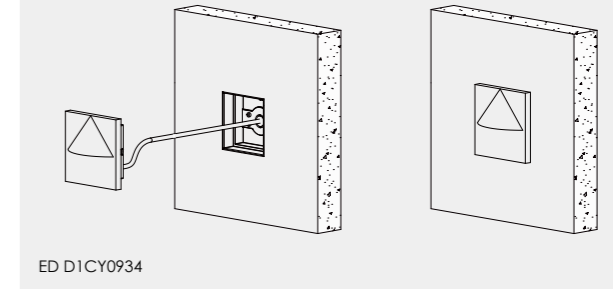
**LED DRIVER** Constant Voltage Input, Constant Current Output

**OPERATING TEMPERATURE** -20°C~50°C

**POWER CABLE** Outside of luminaire  
H05RN-F 2×1.0mm², L=0.5m(12V/24V)  
H05RN-F 3×1.0mm², L=0.5m(120V/240V)

**DIMMING SUPPORT** Triac PWM Available  
1-10V Dali Customized

DIAGRAM OF INSTRUCTION

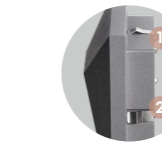


ED D1CY0934

FEATURES



Screwless front cover



Use the high-strength clips for fixation. (please refer remark 1 & 2)

PAINTING COLOR

Regular  
Dark Grey KAP 7037

Secondary  
Silver Grey KAP 9022

Sanded Black RAL 9005

PHOTOMETRIC

