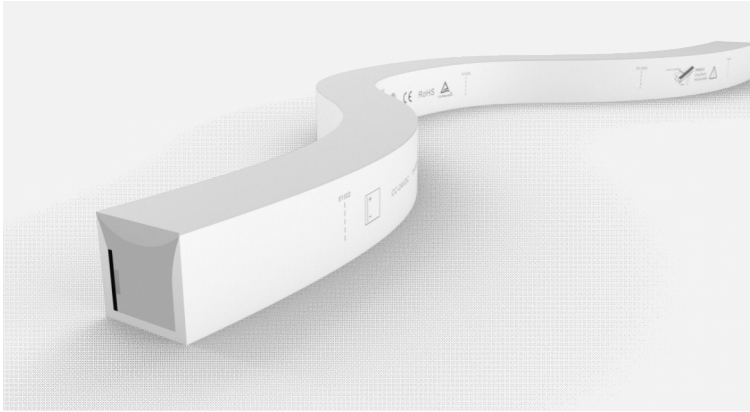
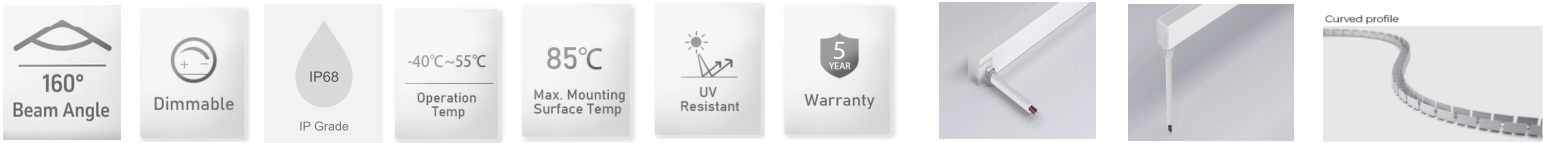
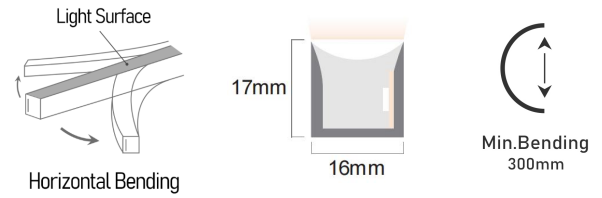


# Specification



## EDN-HB Monocolor (Silicone)



## Technical Parameters

Electrical	Input Voltage	24V Constant Voltage (CV), 24V Constant Current (CC)
	Power Consumption	6W~12W/m
Optical	LED Type & Brand	SMD 2835, Lumiled /Epistar
	CRI	>90, ( R95 customizable)
	Beam Angle	120° (IES)
Physical	Min. Bending Diameter	Φ300mm
Temperature	Operation Temperature	-40°C~55°C
	Max. Mounting Surface Temp.	85°C
Durability	Warranty	5 Years Warranty
	Max. IP Rating	IP68
	Lumen Maintenance	70,000 Hours L70 @ 25°C, 50,000 Hours L70 @ 50°C

## Models List

Model No.	LED Color	Voltage	Working Mode	Power/m	LED Qty/m	Min. Cutting Length	Max. Run Length /Single End
EDN-HB-B-CV24-120-R80-6W	White/Green/Blue	24V DC	CV	6W	120pcs	50mm	16m
EDN-HB-B-CV24-120-R80-7.8W	Red	24V DC	CV	7.8W	120pcs	50mm	14m
EDN-HB-B-CV24-120-R80-9W	White/Green/Blue	24V DC	CV	9W	120pcs	50mm	12m
EDN-HB-B-CV24-120-R80-13W	White/Green/Blue	24V DC	CV	12W	120pcs	50mm	10m